

– OFB –

Service Programs

User Guide

Part 1

- **OFB – Start Center v: 6.5.0**
- **OFB – Color/Font Management v: 5.2.3**
- OFB – Gedcom Profile Management – in Part 2

Diedrich Hesmer
Haldenstr 24
71083 Herrenberg
ofb.hesmer@gmx.de
dhesmer@bluewin.ch

All changes to the previous version are colored

Table of Contents

1	Introduction.....	3
1.1	Copyrights and License Conditions.....	3
1.2	Support, Download & Installation.....	3
1.3	Start of Program.....	3
1.4	Gedcom file (ged-file).....	3
2	OFB Start Center.....	4
2.1	Description.....	4
2.2	Main screen.....	4
2.3	USB Transfer.....	5
2.4	Internet Update.....	6
3	OFB Color/Font Management.....	7
3.1	Description.....	7
3.2	Color/Font file (ocf-file).....	7
3.3	Main screen.....	7

1 Introduction

To simplify and support the usage of "*Our Family Book*" – called **OFB** – corresponding "OFB Service Programs" were developed. Those are:

- **OFB Start Center**
allows start of all OFB programs from a central point, as well as the activation of the license, copying the OFB programs and system files to an USB stick and the selection of the language.
- **OFB Color/Font Management**
this program allows the definition of colors and fonts of the lay-out for the screen OFB lists. The printer output will be optional in colors or in black and white.
- **OFB Gedcom Profile Management** – described in part 2
this program is used to create and manage the different Gedcom profiles and the related profile files (ogp-files) of the OFB. These Profile files are storing the rules for the transition of the genealogical data of the ged-files to the OFB. During importing of the ged-file by the OFB the data will be interpreted and transferred accordingly. Without such profile files the OFB can't process the genealogy data.

1.1 Copyrights and License Conditions

The OFB program and all related files and documentation is shareware, including these OFB Service Programs. Therefor the same copyright and license conditions are valid as defined in the OFB User Guide.

A separate license for the Service Programs is not required, they haven't to be activated.

1.2 Support, Download & Installation

These information are available at the OFB Homepage at <http://ofb.hesmer.name> and in the OFB User Guide.

1.3 Start of Program

By click of the corresponding button of the OFB Start Center or click on the shortcut icon at the place where they have been installed. Alternatively the Color/Font Management and the Gedcom Profile Management may be started by a double click on a ocf-file resp. ogp-file.

1.4 Gedcom file (ged-file)

All genealogical data are stored in a ged-file (Gedcom file). These must be made available by adequate Genealogy programs (e.g. PAF, Gen+, FTM) by their export function.

2 OFB Start Center

2.1 Description

The OFB Start Center (OFB-Start.exe) allows the start of all OFB programs from a central point. Also from here the licenses can be activated, an OFB USB stick generated and the languages defined.

2.2 Main screen

After start of the program the following screen shows up. In the middle are the 3 OFB programs, left and right the 4 Gedcom Service Programs if those have been installed during setup.



Fig 1: Main screen OFB Start Center

The individual program starts after pushing the corresponding button. It's allowed to run multiple programs in parallel. Only the buttons of the programs installed are visible.

- **Info**
at the top right corner is a button. By pushing this an information screen opens showing the actual path for the program folder (where the OFB programs and basic files are stored) and the data folder (where the ini files, license file and user guides are stored).
- **Update**
By this the availability of new program versions and modified User Guides at the homepage can be checked and the new versions downloaded to the local PC.
- **USB Transfer**
Opens the USB Transfer screen for creation of an OFB USB Stick or any other storage media.
- **Help**
Opens the User Guide – part 1
- **Home**
Opens the GSP homepage by the browser.
- **Language**
By this another language can be selected via a selection screen. The selected language will be used for

the screen and the output. Only language files with the name "ofb-xx.lng" ("xx" are the nations characters, e.g. "en" for English) are offered. The selected language file will be loaded and the name listed below the language button

- **License**

By this the license information provided by license file attached to an email can be activated on the local PC. After pushing the button, the standard file load screen shows up and expects a file type of "ofb-*.lic" (The license file attached to the email is named "ofb-YourName.lic", whereas "YourName" usually is compiled from the name of the license owner. This file should be stored in a save folder.). After selection of the file their content will be transferred to the file "ofb.lic" to be available for the OFB program and, if the license is valid for these programs, the Gedcom Service programs. Now the activation of the license is completed.

- **Close**


closes the program.

2.3 USB Transfer

The screen supports the creation of an USB stick (or any other folder structure). The folder "OFB" will be created and all required programs and files copied to this folder. The USB stick now may be carried to any PC meeting the system requirements and the OFB can be started.



Fig 2: Screen for USB Stick creation

- By  a drive or path on the USB stick or any other storage media will be selected (at fig. "D:\Ofb Projekt"). At this place a folder "OFB" will be created. All programs and files will be copied to this folder.
- Selection of **incl. License file** also copies the file "ofb.lic" to the folder.
Note: A transfer to third parties is NOT allowed according to the license conditions.
- By **Start** the copy process starts. The affected folders will be listed and the status shown at the progress bar.
- By **Close** the program returns to the OFB-Start screen.

Messages will be listed at the bottom bar of the screen.

2.4 Internet Update

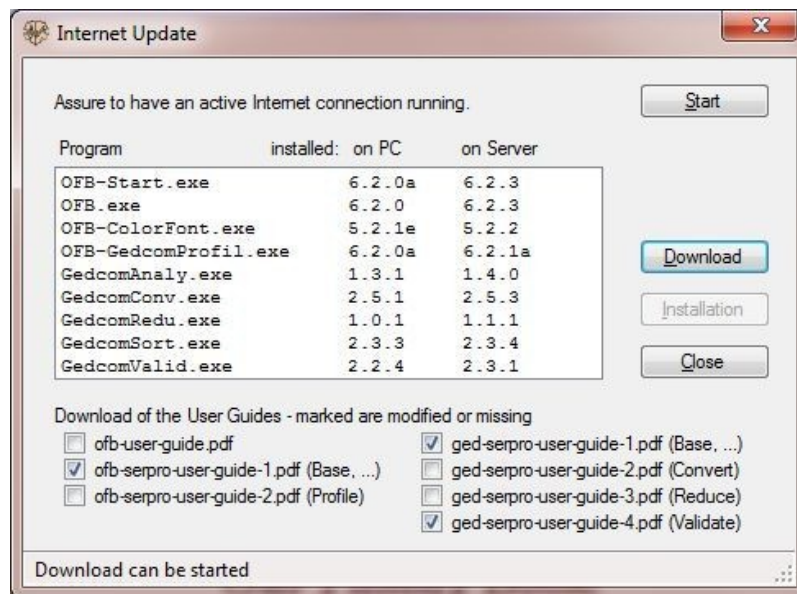


Fig3: Screen for Internet Update

This allows an automated Internet update. Before starting you have to assure an active Internet connection. After opening the screen is more or less empty.

- By **Start** the check for new updates at the server of the homepage will start. Assure that you are connected to the Internet. In case of a firewall you have to grant access rights for the program, if necessary. The process may need several seconds.
In case of a red message at the lower area of the screen no Internet connection was available or the server is down for maintenance or the file containing the version information could not be found. Please wait a short time and try again.
After successful check the results will be shown at the screen, as shown at the above figure. The modified User Guides will be checked automatically.
- In case new versions have been found or User Guides are selected, by **Download** the download of the user guides and/or the installation file "ofb-setup.exe" can be started.
- In case a new installation file has been downloaded, by **Installation** the installation of the program starts. The update screen and the start center will be closed automatically.

3 OFB Color/Font Management

3.1 Description

The program (OFB-ColorFont.exe) is used to create and manage the definitions for colors and fonts and the related files (ocf-files) for the design of the screen output of the OFB lists. The printer output will always be in the standard system colors.

3.2 Color/Font file (ocf-file)

These files will store the selected color and font definitions. By this the OFB is creating the necessary control commands for the css files and is providing the requested colored genealogy symbols.

3.3 Main screen

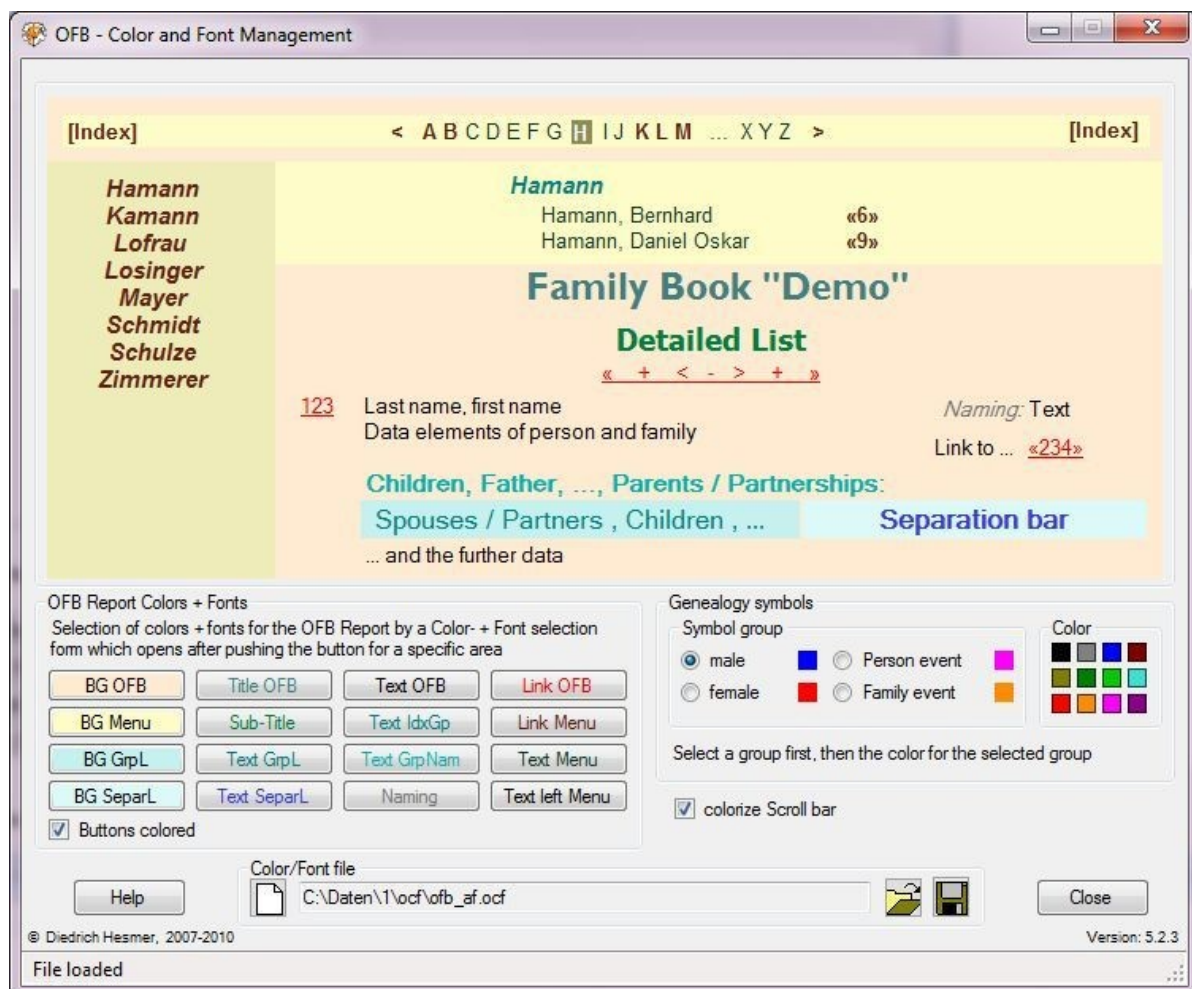


Fig 4: Main screen Color/Font Definition

After start of the program the following screen shows up. The name of the last loaded file, if available, will be reloaded, if found in an ini-file, will be reloaded. The upper part of the screen will show an image of the screen output with the colors according to the definitions.

The group **OFB Report Colors + Fonts** contains 16 buttons to define the color of each area – see next table (for the buttons "BG Sepal", "Text Sepal", "BG GrpL", "Text GrpL" and "Text GrpNam" the affected areas of the report are colored marked in the "OFB User Guide" in section "Description of ..."). After pushing a button, a color dialog screen will pop up. At the two upper right areas the color will be defined by moving the cross hair and the solid triangle to the proper position or by entering the red, green and blue color portions to the 3 fields at the lower right side. Pushing "OK" will return to the main window and the coded values of the selected color will be shown at the status bar, or for the (F) marked areas the standard font dialog screen

Button	Areas of the report
BG OFB	Background color general (2 additional background colors will be calculated)
BG Menu	Background color of the menus
BG GrpL	Background color of the group boxes for group names OFB type 3
BG SepaL	Background color of the separation lines for names + generations OFB type 1..4
Title OFB (F)	Text color + font of the Title of the OFB reports + index lists
Sub-Title (F)	Text color + font of the Sub-Title of the OFB reports + index lists
Text GrpL (F)	Text color + font of the group boxes (e.g. parents)
Text SepaL (F)	Text color + font of the separation lines
Text OFB (F)	Text color + font of the OFB reports + index lists
TextIdxGp (F)	Text color + font of the group names in index lists of detail design
Text GrpNam (F)	Text color + font of the Group names (Children, Father, ...)
Naming (F)	Text color + font of the naming text
Link OFB	Link color of the OFB reports + index lists
Link Menu	Link color of the menus
Text Menu	Text color of the general text of the menus (e.g.. names)
Text left Menu	Font of the left menu for names

Table 1: Areas of coloring + font definition

opens to define name, size and effect of the font. Pushing "OK" will return to the main window and the coded values of the selected color and the font values will be shown at the status bar and the effect shown at the upper part of the screen.

By the option **Buttons colored** the 16 buttons will be colored according the color of the associated area.

The group **Genealogy symbols** allows the selection of colors for the genealogy symbols. The group has to be selected first, then one of the 12 colors by clicking on the pattern. The selected color will be shown right of the group name. Person event means birth, christening, death and burial, Family event means marriage, divorce and the analogous None-marital relationships.




By choosing the option **color Scroll bar** the scroll bars at the right side will be colored by the background color. This only will be effective for the MS Internet Explorer.



Fig 5: Color Dialog screen

saving will pop up.

- Messages will be written to the status bar at the bottom of the window, including the chosen color in the formats hexadecimal (hex), integer (int), red-green-blue-part (rgb).

- Pushing  the filename will be deleted, by this the standard system colors will be used.
- Pushing  a color/font file will be loaded.
- Pushing  a folder (e.g. "C:\Data\OFB\files\") and name for the color/font file will be defined and the file stored as "ocf-file". This file contains all settings specified by the screen for reuse and for using by the OFB.
- Pushing **Help** opens the OFB utility user guide.
- Pushing **Close** will close the program. The storage location name of the current color/font file will be written to an ini-file for reload. If data have been changed a confirmation dialog for data